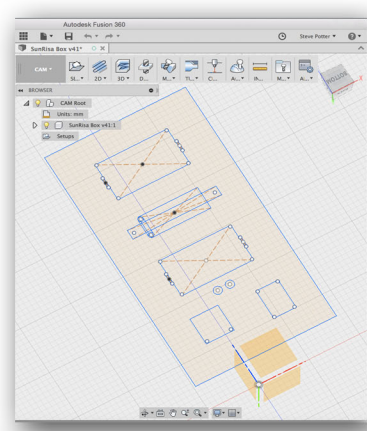


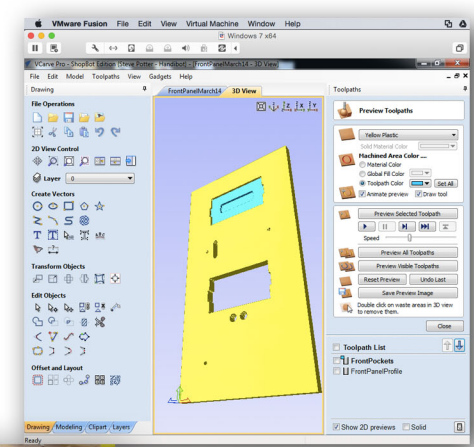
# Building SunRisa: Mechanical

Prof. Steve M. Potter @SteveMPotter steve.potter@gmail Dublin Maker 2017

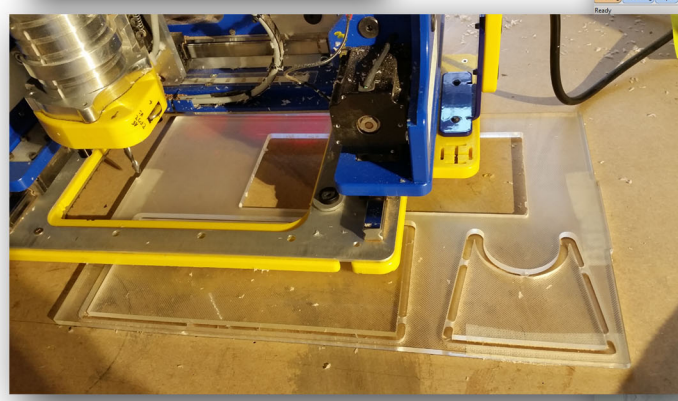
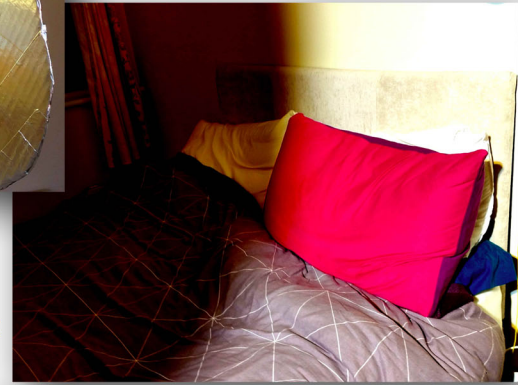
CAD drawing of electronics enclosure in Fusion360



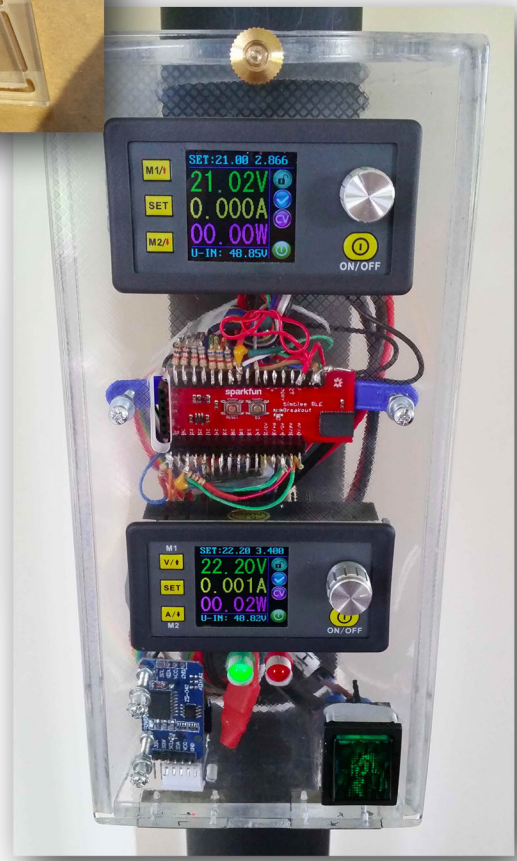
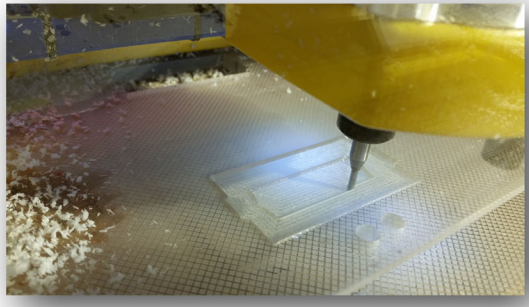
CAM toolpath in VcarvePro



Reflective card prevents my wife from being awakened by the light



Carving the enclosure parts with the Handibot CNC router from surplus acrylic sheets



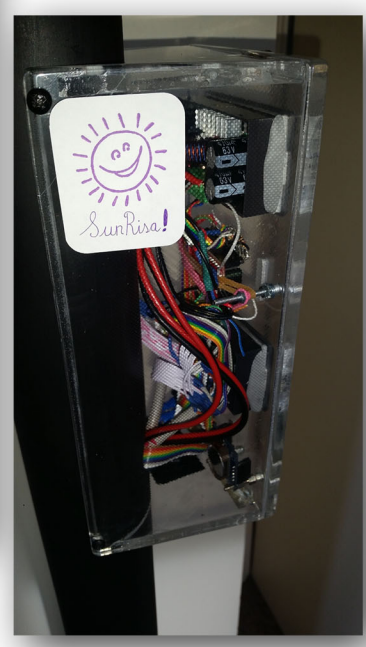
LEDs cooled by 2 CPU fans attached to pan-tilt head and light-blocker card using brackets



SunRisa V.3.2 finished!



Light-diffusing pattern was buffed off of the acrylic



Hinged door for easy access to electronics



Two power supplies clamped between two heavy brake disks, painted and covered with fluorescent acrylic panels cut on the Handibot

